

SMART Yard Expansion

DRB Panel B Public Hearing

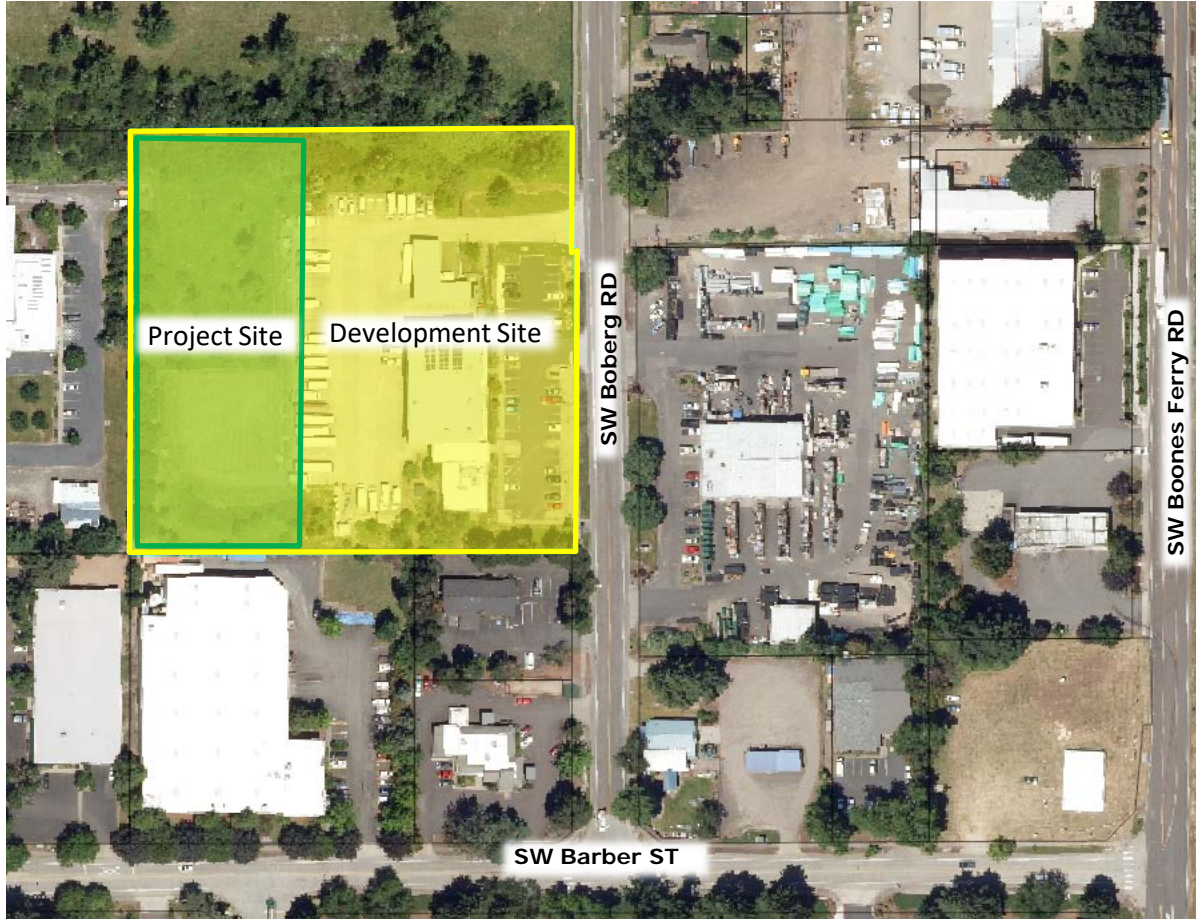
September 23, 2024

Presented by: Georgia McAlister, Associate Planner

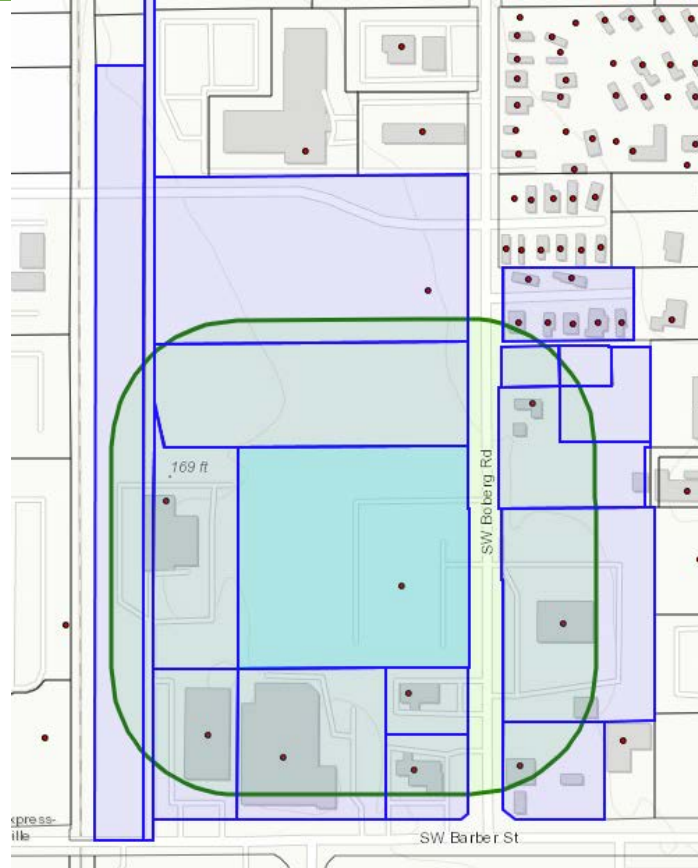


WILSONVILLE
OREGON

Location



Noticing

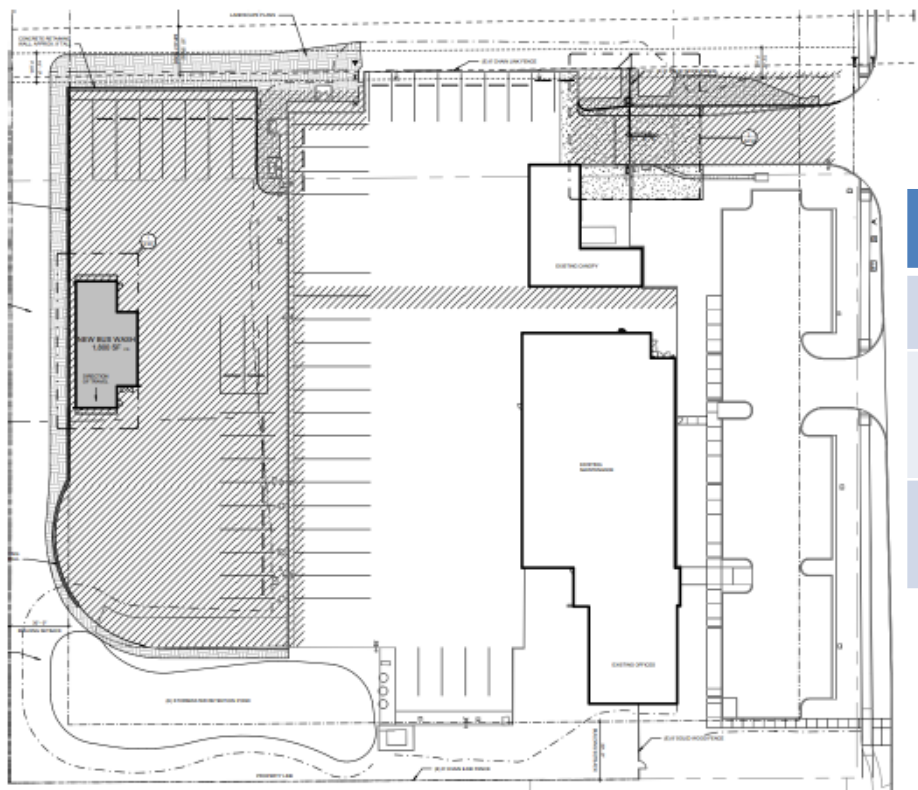


List of Applications

- Verifying Compliance with Clear & Objective Standards:
 - Stage 2 Final Plan Modification (STG224-0003)
 - Site Design Review (SDR24-0004)
 - Type C Tree Removal Plan (TPLN24-0004)

Stage 2 Final Plan Modification

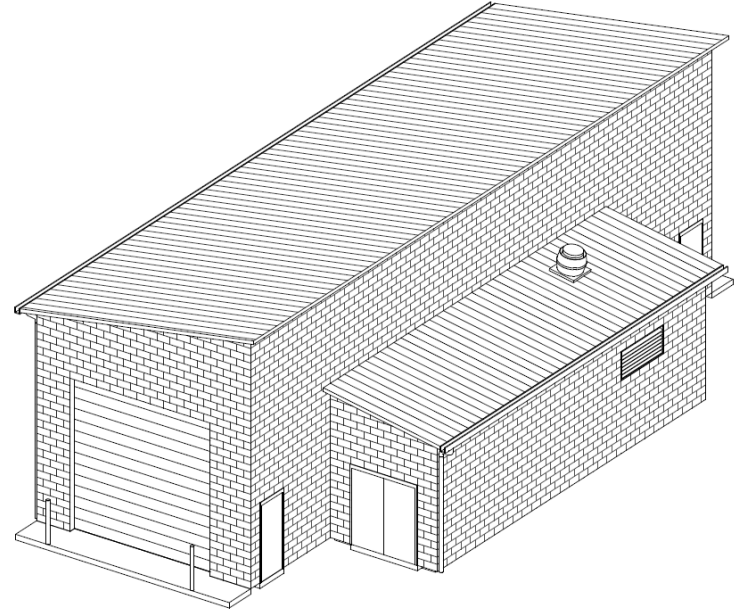
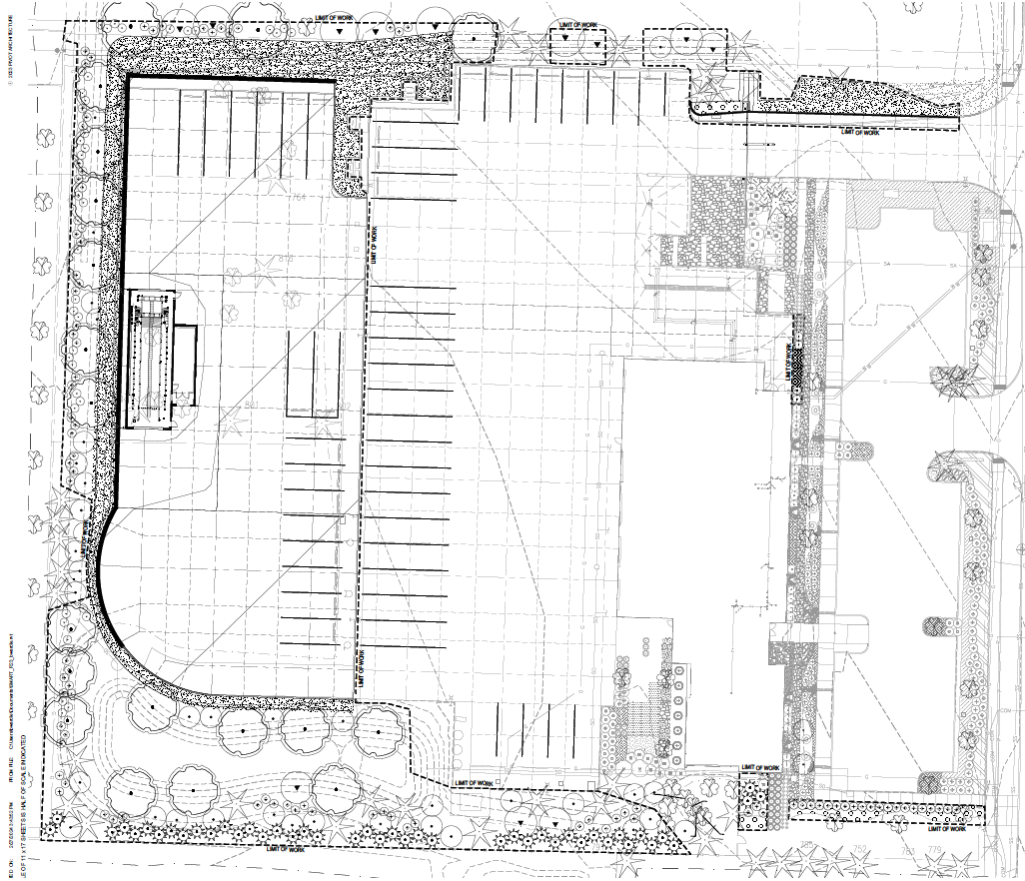
Proposed Site Plan



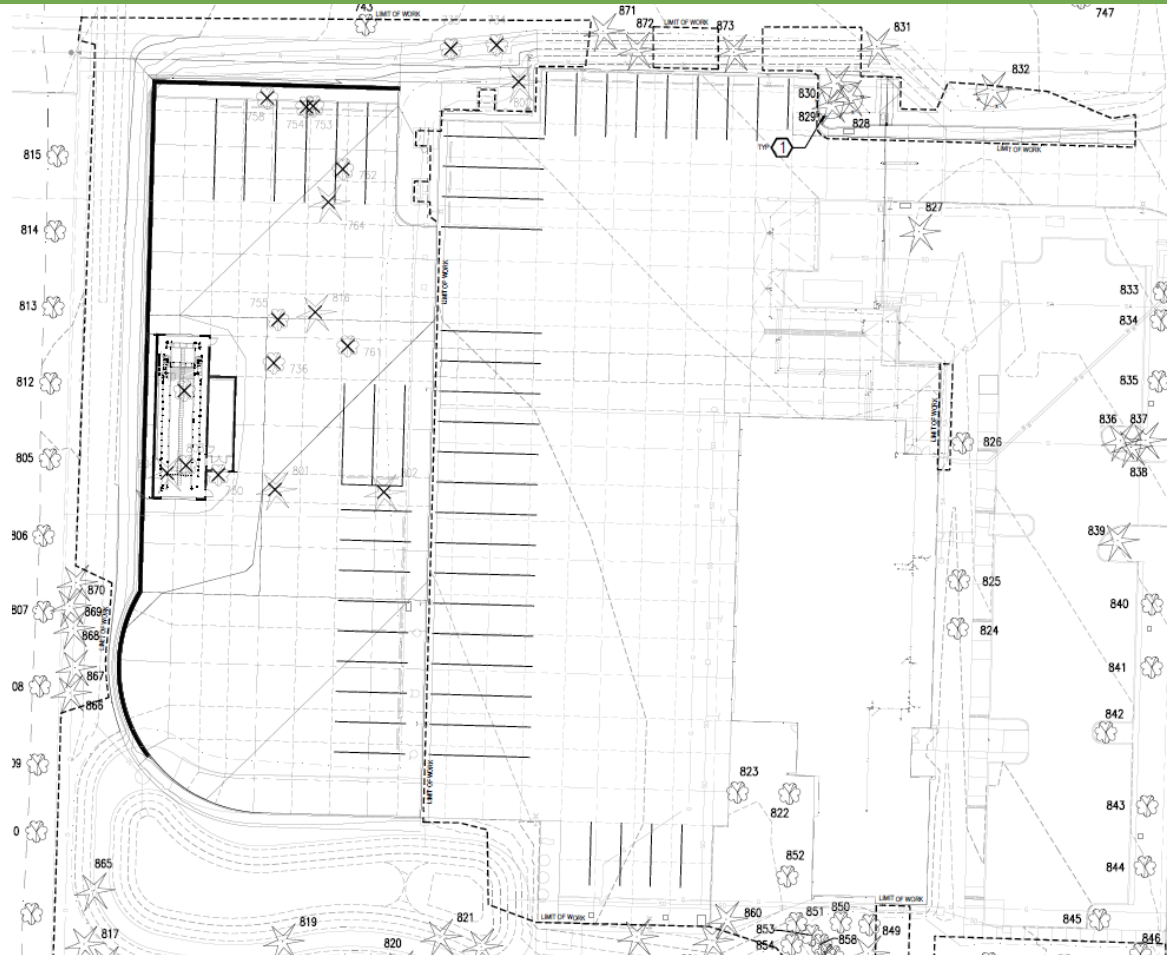
Tabulation of Site Plan Features

Building Area	1,800 sf	
Expansion/ Storage Area	30,730 sf	
Landscape Area	8,040 sf	26%

Site Design Review

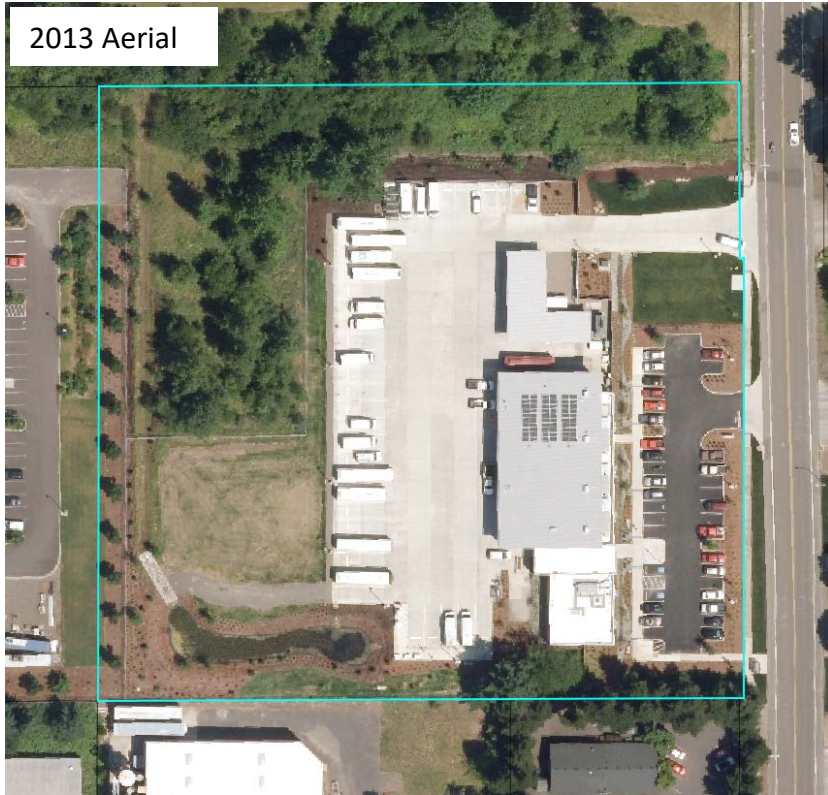


Type C Tree Removal Plan



Tree Mitigation

2013 Aerial



2022 Aerial



Discussion



WILSONVILLE
OREGON