

RESOLUTION NO. 349

A RESOLUTION DECLARING A NUISANCE DESCRIBED IN THE WILSONVILLE CODE, SECTION 6.200(1)(e) ON THE PROPERTIES AS DESCRIBED HEREIN

WHEREAS, the Wilsonville Code, Section 6.200(1)(e) provides that where the maintenance of grass, weeds and noxious vegetation is maintained in such a manner as to be declared a nuisance affecting the public safety; and

WHEREAS, the nuisance may be abated in the manner prescribed in Sections 6.200 to 6.230.

NOW, THEREFORE, BE IT HEREBY RESOLVED by the Wilsonville City Council as follows:

A. A nuisance as prescribed in Section 6.200(1)(e) of the Wilsonville Code and more specifically described as a hazardous condition that may cause fire, exists on the properties as listed one (1) through sixty-five (65) and described below, are to be abated under the provisions of Section 6.210 of the Wilsonville Code.

1. Mid-Valley Investments; Sec. 13 (CA), Tax Lot 300, Block 2, Lot 23
2. Mid-Valley Investments; Sec. 13 (CA), Tax Lot 400, Block 2, Lot 24
3. Mid-Valley Investments; Sec. 13 (CA), Tax Lot 500, Block 2, Lot 25

4. Mid-Valley Investments; Sec. 13 (CA), Tax Lot 600, Block 2, Lot 26
5. Mid-Valley Investments; Sec. 13 (CA), Tax Lot 700, Block 2, Lot 27
6. Mid-Valley Investments; Sec. 13 (CA), Tax Lot 1100, Block 2, Lot 31
7. Mid-Valley Investments; Sec. 13 (CA), Tax Lot 1200, Block 2, Lot 32
8. Mid-Valley Investments; Sec. 13 (CA), Tax Lot 1300, Block 2, Lot 33
9. Mid-Valley Investments; Sec. 13 (CA), Tax Lot 1400, Block 2, Lot 34
10. Mid-Valley Investments; Sec. 13 (CA), Tax Lot 1500, Block 2, Lot 35
11. Mid-Valley Investments; Sec. 13 (CA), Tax Lot 1600, Block 2, Lot 36
12. Mid-Valley Investments; Sec. 13 (CA), Tax Lot 1700, Block 2, Lot 37
13. Mid-Valley Investments; Sec. 13 (CA), Tax Lot 1800, Block 2, Lot 38
14. Mid-Valley Investments; Sec. 13 (CA), Tax Lot 1900, Block 2, Lot 39
15. Mid-Valley Investments; Sec. 13 (CA), Tax Lot 2000, Block 2, Lot 40
16. Mid-Valley Investments; Sec. 13 (CA), Tax Lot 2100, Block 2, Lot 41
17. Mid-Valley Investments; Sec. 13 (CA), Tax Lot 2200, Block 2, Lot 42
18. Mid-Valley Investments; Sec. 13 (CA), Tax Lot 2300, Block 2, Lot 43
19. Mid-Valley Investments; Sec. 13 (CA), Tax Lot 2400, Block 2, Lot 44

20. Mid-Valley Investments; Sec. 13 (CA), Tax Lot 2500, Block 2, Lot 45
21. Mid-Valley Investments; Sec. 13 (CA), Tax Lot 2600, Block 2, Lot 46
22. Mid-Valley Investments; Sec. 13 (CA), Tax Lot 2700, Block 2, Lot 47
23. Mid-Valley Investments; Sec. 13 (CA), Tax Lot 3300, Block 4, Lot 1
24. Mid-Valley Investments; Sec. 13 (CA), Tax Lot 3400, Block 4, Lot 2
25. Mid-Valley Investments; Sec. 13 (CA), Tax Lot 3700, Block 4, Lot 5
26. Mid-Valley Investments; Sec. 13 (CA), Tax Lot 3800, Block 4, Lot 6
27. Mid-Valley Investments; Sec. 13 (CA), Tax Lot 3900, Block 4, Lot 7
28. Mid-Valley Investments; Sec. 13 (CA), Tax Lot 4000, Block 4, Lot 8
29. Mid-Valley Investments; Sec. 13 (CA), Tax Lot 4100, Block 4, Lot 9
30. Mid-Valley Investments; Sec. 13 (CA), Tax Lot 4200, Block 4, Lot 10
31. Mid-Valley Investments; Sec. 13 (CA), Tax Lot 4300, Block 4, Lot 11
32. Mid-Valley Investments; Sec. 13 (CA), Tax Lot 4400, Block 4, Lot 12
33. Mid-Valley Investments; Sec. 13 (CA), Tax Lot 4500, Block 4, Lot 13
34. Mid-Valley Investments; Sec. 13 (CA), Tax Lot 4600, Block 4, Lot 14
35. Mid-Valley Investments; Sec. 13 (CA), Tax Lot 4700, Block 4, Lot 15

36. Mid-Valley Investments; Sec. 13 (CA), Tax Lot 4800, Block 4, Lot 16
37. Mid-Valley Investments; Sec. 13 (CA), Tax Lot 4900, Block 4, Lot 17
38. Mid-Valley Investments; Sec. 13 (CA), Tax Lot 5000, Block 4, Lot 18
39. Mid-Valley Investments; Sec. 13 (CA), Tax Lot 5100, Block 4, Lot 19
40. Mid-Valley Investments; Sec. 13 (CA), Tax Lot 5200, Block 4, Lot 20
41. Mid-Valley Investments; Sec. 13 (CA), Tax Lot 6400, Block 5, Lot 12
42. Mid-Valley Investments; Sec. 13 (CA), Tax Lot 6500, Block 5, Lot 13
43. Mid-Valley Investments; Sec. 13 (CA), Tax Lot 6600, Block 5, Lot 14
44. Mid-Valley Investments; Sec. 13 (CA), Tax Lot 6700, Block 5, Lot 15
45. Mid-Valley Investments; Sec. 13 (CA), Tax Lot 6800, Block 5, Lot 16
46. Mid-Valley Investments; Sec. 13 (CA), Tax Lot 6900, Block 5, Lot 17
47. Mid-Valley Investments; Sec. 13 (CA), Tax Lot 7600, Block 5, Lot 24
48. Mid-Valley Investments; Sec. 13 (CA), Tax Lot 7700, Block 5, Lot 25
49. Mid-Valley Investments; Sec. 13 (CA), Tax Lot 7800, Block 5, Lot 26
50. Mid-Valley Investments; Sec. 13 (CA), Tax Lot 7900, Block 5, Lot 27
51. Mid-Valley Investments; Sec. 13 (CA), Tax Lot 8000, Block 5, Lot 28

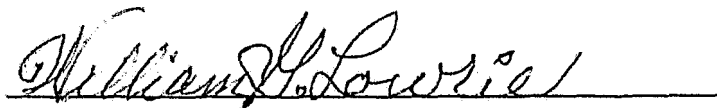
52. Mid-Valley Investments; Sec. 13 (CA), Tax Lot 8100, Block 5, Lot 29
53. Mid-Valley Investments; Sec. 13 (CA), Tax Lot 8200, Block 5, Lot 30
54. Mid-Valley Investments; Sec. 13 (CA), Tax Lot 8600, Block 5, Lot 34
55. Mid-Valley Investments; Sec. 13 (CA), Tax Lot 8700, Block 5, Lot 35
56. Mid-Valley Investments; Sec. 13 (CA), Tax Lot 8800, Block 5, Lot 36
57. Mid-Valley Investments; Sec. 13 (CA), Tax Lot 8900, Block 5, Lot 37
58. Mid-Valley Investments; Sec. 13 (CA), Tax Lot 9000, Block 5, Lot 38
59. Mid-Valley Investments; Sec. 13 (CD), Tax Lot 1900, Block 2, Lot 14
60. Mid-Valley Investments; Sec. 13 (CD), Tax Lot 2000, Block 2, Lot 15
61. Mid-Valley Investments; Sec. 13 (CD), Tax Lot 2100, Block 2, Lot 16
62. Mid-Valley Investments; Sec. 13 (CD), Tax Lot 2200, Block 2, Lot 17
63. Mid-Valley Investments; Sec. 13 (CD), Tax Lot 2300, Block 2, Lot 18
64. Mid-Valley Investments; Sec. 13 (CD), Tax Lot 2400, Block 2, Lot 19
65. Mid-Valley Investments; Sec. 13 (CD), Tax Lot 2500, Block 2, Lot 20

B. A nuisance does exist on the properties as described in the forepart of this resolution under the provisions of Section

6.204 of the Wilsonville Code by reason of grass, weeds, noxious vegetation and other substance being on the property.

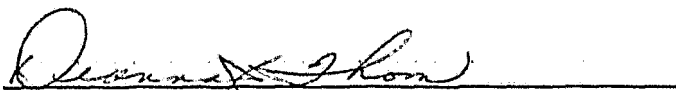
C. The Building Official shall take action as prescribed in Section 6.220 through 6.230 of the Wilsonville Code to abate the nuisance existing on the aforementioned properties and cause to be posted a notice upon these properties to be abated of such nuisance as prescribed in Section 6.222 of the Wilsonville Code.

ADOPTED by the Wilsonville City Council at a regular meeting thereof on the 6th day of September, 1983, and filed with the City Recorder this same date.



WILLIAM G. LOWRIE, Mayor

ATTEST:



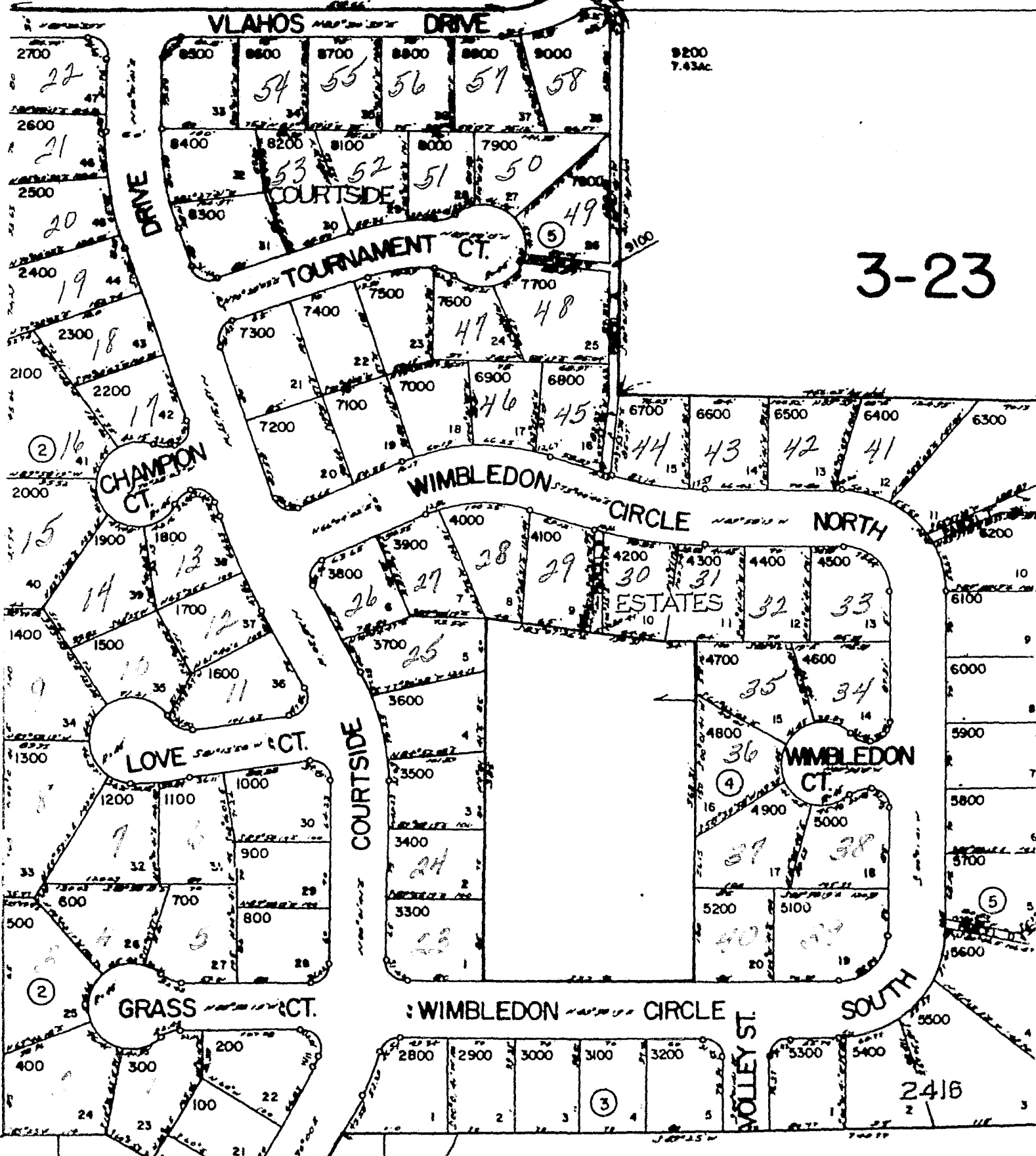
DEANNA J. THOM, City Recorder

NE 1/4 SW 1/4 SEC. 13 (CA) T. 5S. R. 1W. WM.

CLACKAMAS COUNTY

1" = 100'

SEE MAP 3 IW 13B



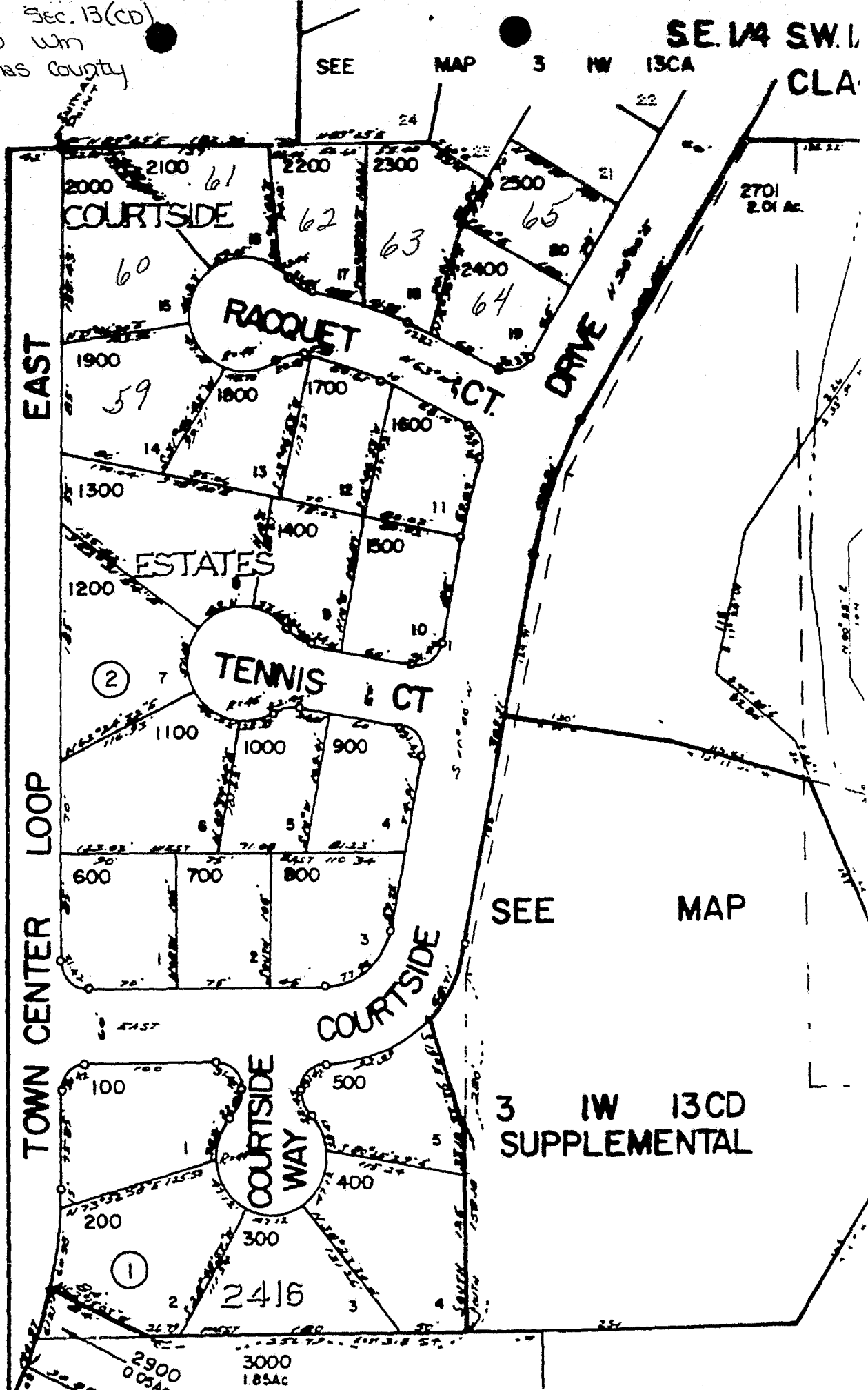
3-23

SE 1/4 SW 1/4 Sec. 13(CD)
T35 R1W Wm
Clackamas County

SEE MAP 3 W 13CA

SE 1/4 SW 1/4
CLA

LED
3



SEE MAP 3 W 13



SEE MAP

3 W 13CD
SUPPLEMENTAL

①

②

2416

2900
0.054

3000
1.85Ac

2701
2.01 Ac.